



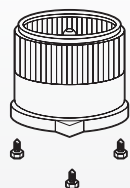
87706 INSTALLATION GUIDE

RIGHT-HAND DRIVE VEHICLES



The **sub-wiring harness** is applied only on some selected vehicle models/versions and is not a standard wiring equipment.

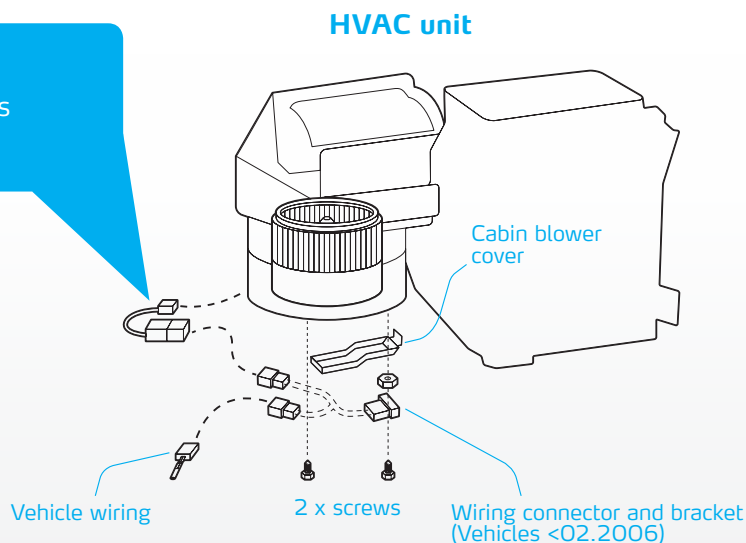
Needed for installation:



87706 cabin blower including 3 x screws



Clip (Included in 87706)



CAUTION! To ensure proper and safe installation, as well as long, trouble-free operation of the cabin blower always observe the vehicle manufacturer's installation instruction for the given car version and specific guidances included in thereof.

- 1 Detach all wirings and brackets as well as the sub-wiring connector and the cabin blower cover.

Caution: we recommend to avoid reusing wiring connector and bracket (Vehicles<02.2006), cabin blower cover and sub-wiring harness if applied

- 2 By means of utility knife make a cut along the notching groove located on the inner side of the rib. **For the cabin blower versions with three screws, skip steps 2, 3 and 5 of the instruction**

- 3 Cut and remove the ribs from the blue circle marked areas

- 4 Detach the cabin blower from the cassette

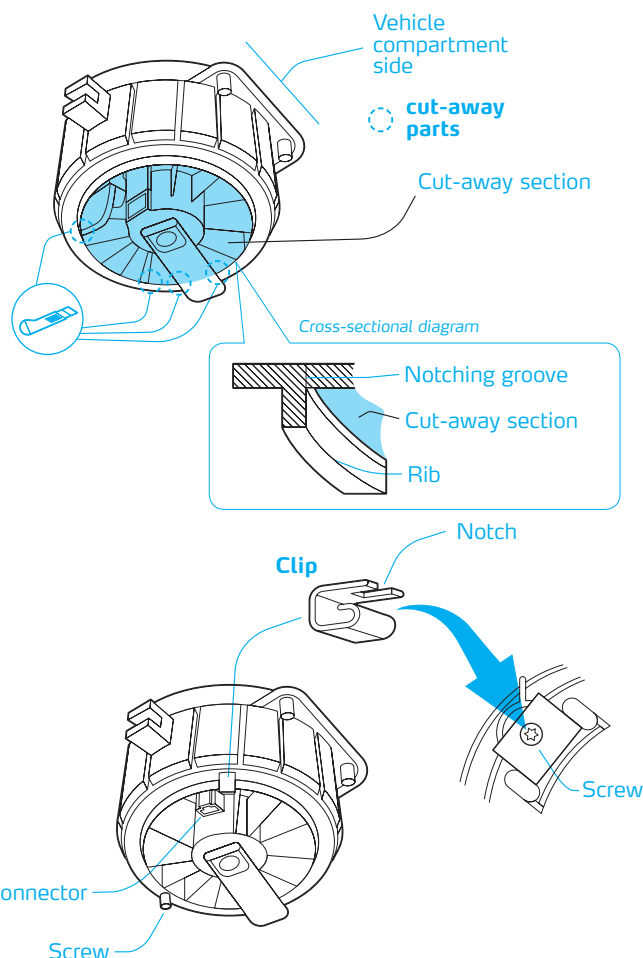
- 5 Remove any cutting rests from the area

- 6 Mount the new cabin blower by means of **the three included screws**

Tightening torque: 1.86 N·m (1.22-2.5 N·m)
or 19 kgf·cm (12.4-25.5 kgf·cm)

- 7 Mount the clip. The notch side should point upward. Slide the clip over the screw on the cabin blower connector side (a "click" sound should be heard)

- 8 Connect the vehicle wiring to the cabin blower connector



For more technical product information, please consult our online catalogue at www.nissens.com/catalogue. Otherwise please contact your local sales office or one of the official Nissens distributors.